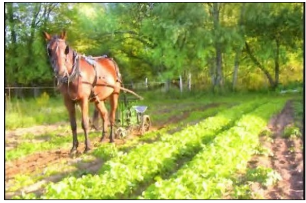


2022 Organic Produce CSA



Homer Organic Family Farms



Our Farming Practices

We farm much the same way as our forefathers of the 1930's. Our fields are plowed and worked with horses. Our large families provide many hands to do the planting, picking rocks, hoeing, weeding, harvesting, washing produce and packing boxes.

We are certified organic. Every year all of our farms are inspected by a third party and the information sent to our certifier to verify that we are in compliance with National Organic Program Standards. This is to assure you that we are not using harmful chemicals and pesticides or genetically-modified organism (GMO) seeds.

About Us

We farmers (there are seven participating in our co-op) have been raising produce for more than a decade, providing fresh vegetables for farmer's markets and several Ann Arbor food stores.

We, being of the Amish faith, do not have computers or e-mail, and only limited access to phones. Our communication is best done by mail or through our friends at Arbor Farms.

What is a CSA Program?

By subscribing to a CSA you are investing in a share of the farmer's harvest. You are also sharing the farmer's risk. If a crop fails we will need to substitute something else or wait for the next planting. You will get a box of fresh vegetables every week. The early harvest begins June 1st, continues throughout summer, and ends September 29 (for a total of 18 weeks).

Not only are subscribers getting the freshest food, but they are also showing their support for the small farmer. The program works well for farmers and members both. The farmer can plan how much to grow; the member knows they have a box of fresh vegetables coming every week. It makes shopping quite simple. It broadens your eating habits, as you will try new things you've never had before. It can challenge the cook. A seed catalog to us is like a cook-book to you. Sometimes we like to try new items. So be our guest and enjoy the food.

What might I see in my weekly box?

Early Season: June

Asparagus,
Leaf Lettuce,
Swiss Chard,
Kale varieties,
Collards,
Zucchini,
Peas: Snap and Shell,
Salad Greens,
Rhubarb

Summer Season: July/August

Lettuce, Broccoli, Cabbage,
Radishes, Beans, Peppers,
Zucchini, Cucumbers, Hot Peppers,
Carrots, Peas, Tomatoes,
Sweet Potatoes, Basil,
Cantaloupe, Potatoes,
Green Onions, Sweet Corn,
Onions, Eggplant, Beets,
Garlic, Watermelon

Late Season: September

Remaining summer crops,
Red Peppers,
Hard Squash,
Spinach,
Late Greens,
Turnips,
Parsnips

Community Supported Agriculture



2022 Organic Produce CSA

Homer Organic Family Farms

Duration: 18 weeks/
June 1 - September 29

Cost: \$450

Share Size: 1/2 Bushel box
(2-person size, about 9-10 lbs
will vary w/ seasonal contents)

Subscriber Information

Name(s) _____

Phone # _____

Address _____

Phone # _____

City/Zip _____

E-mail _____

Choose your Pickup Time: (circle one)

Wednesdays @ 7:30AM or **Thursdays @ 2:30PM**

Picking up your box within one hour of designated time will yield the freshest produce. All pickups will take place in a designated area in front of Arbor Farms, outside the store and under our canopy to protect from the elements as much as possible. **You will be able to park, pick up your box, and be on your way in as little as 60 seconds!** Please note that boxes not picked up within 36 hours will be donated to Food Gatherers.

Choose your Payment Schedule: (circle one) **Please make checks payable to Arbor Farms**

\$450 paid in full

\$225 now, remaining \$225 by May 31st

fresh. local. organic.



**ARBOR FARMS
MARKET**